

BACK ON THE BLOCK!

At long last, we can see the light at the end of the tunnel! Following the devastating 2023 flood, the repair and renovation work at YDL-Michigan Avenue is nearly complete. The building's entrance is the main area awaiting construction work. In the meantime, staff are downtown preparing, shelving books, and putting everything back to rights.

We hope to celebrate an entire Reopening Week right around the holidays, making the brand-new, beautiful Michigan Avenue interior a gift to our community. Check ypsilibrary.org for the big announcement, then drop in for activities and giveaways, and have fun exploring the new space.

The Ypsilanti District Library's three branches are as unique as our district's three communities. They all offer amazing events, fascinating reads, free high-speed Internet, spaces to study, learn, and collaborate, and so much more. Visit and take advantage of everything they provide. Something wonderful is bound to surprise you!

— Lisa Hoenig, Director



The new play space at the Superior branch is definitely a hit! Visit regularly to enjoy rotating themes and new toys.

TAKE A BOW, JOY!



After more than 16 years, Joy Cichewicz is stepping down as the YDL-Michigan Branch Manager. Her last day in that position will be February 22, 2025.

Cichewicz started as YDL-Michigan Branch Manager in August 2008. She has overseen staff, services, and programs and created a welcoming environment for patrons from all walks of life.

"Joy is the heart and soul of the Michigan Avenue Library," said YDL Youth Librarian Kelly Scott. "She cares deeply for this city, the people who live in it, and her YDL colleagues."

Joy increased programs from a single weekly storytime to dozens of monthly programs, including Halloween Downtown and Noise Permit. When she saw hungry kids hanging out in the downtown branch, Joy helped YDL become one of the first libraries to participate in the Meet Up and Eat Up summer lunch program.

The needs of downtown Ypsilanti fueled her decisions at YDL-Michigan.

"I believe in servant leadership," Joy said. "My goal has always been to help my staff to be creative, compassionate, kind to each other, and relevant to our public."

During the COVID-19 closure, the branch provided curbside book and kit pickups, printing, and income tax services. Managing 24-hour locker pickup, relocating programs, and staffing the Bookmobile on Fridays during the latest construction closure also ensured the downtown branch was as accessible as possible.

"I'm proud of my staff," Joy said. "Every day they aspire to bring their best selves to their jobs, learn what our public needs, and try to provide it."

Her personal touch has resonated just as much as the countless initiatives she brought downtown.

"As a leader, she makes you feel like anything is possible," said YDL para-professional Ellen Steves. "But she also operates on a small scale, [like] keeping granola bars in her desk drawer for hungry teens, [or] helping a veteran get medicine and treatment for painful corns on his feet."

She even helped one of our current Outreach team members get his job.

"It was common for me to take my kids to Michigan Ave. for story time," said Outreach para-professional Khi Brenen. "On one of those days I talked to Joy about working for YDL. She quietly walked away and came back with a job application and gave me pointers."

She plans to maintain her connection to YDL in a different capacity moving forward, so you may still see her around the stacks, in between gardening, travel, and spending time with her grandkids.

"I appreciate having the honor of serving YDL and the Ypsilanti community!" Joy said.

IN THIS ISSUE

<i>Transforming Superior Spaces</i>	2-3	<i>What Resolution Will You Make?</i>	9
<i>Black History Month Highlights</i>	2	<i>And the Oscar Goes To...</i>	9
<i>MLK Day of Service</i>	2	<i>Navigate Tax Season</i>	10
<i>Grant Helps YDL Chess Club Level Up</i>	3	<i>Catch the Winter Food Market</i>	10
<i>New Lockers Coming to YDL-Whittaker</i>	3	<i>Warming Centers</i>	10
<i>Events</i>	4-7	<i>Meet the 2024 Writers of Ypsilanti</i>	11
<i>Read, Learn, and Explore Over Winter Break</i>	8	<i>Reminders for a Healthier Winter</i>	11
<i>Important School Dates</i>	8	<i>Write Your Adventure</i>	11-12
<i>YCS Introduces Kid-Friendly Library Redesign</i>	8	<i>Winter with TheRide.org</i>	12
<i>Digitize Your Family History</i>	9	<i>Friends of YDL Book Sale</i>	12



5577 Whittaker Road
Ypsilanti, MI, 48197

Non-profit Org.
US Postage
PAID
Permit No. 658
Ypsilanti, Michigan
ECRWSSDDM
RESIDENTIAL CUSTOMER

TRANSFORMING SUPERIOR SPACES

Art can turn spaces into storytellers.

Last summer, YDL sought submissions from artists to help bring our community's narratives to life through a permanent art collection at the Superior branch.

The selected pieces—by Paloma Núñez-Regueiro, Guanhua Yao, and Monica Prince—are distinctive windows into the cultural mosaic of our neighborhood. They will be on display at YDL-Superior by the end of December.



Paloma Núñez-Regueiro, *Breathe In, Breathe Out*

Núñez-Regueiro captures the resilience of marginalized communities in her striking diptych *Breathe In, Breathe Out*. Part of her “Essays on Invisibility” series, the work speaks to how people from marginalized communities navigate life in a majoritarian society.

“As an immigrant and a BIPOC woman, I know that many times...we need to remember to breathe through such an exhausting process. We breathe for ourselves, for our families, and to show our children that it is possible to attain our goals one breath at a time.”

Her piece features Guarumo leaf—a resilient plant native to Central America and the Caribbean known for its healing properties and hurricane resistance—to explore themes of perseverance and identity.

Nunez-Regueiro has spent the last eight years as a resident artist at Ypsi Alloy Studios, where she works as a printmaker, instructor, and art activist.

BLACK HISTORY MONTH

This February, we honor the profound impact and enduring legacy of Black Americans who have shaped our nation's identity, culture, and progress. The 2025 national theme, "African Americans and Labor," celebrates generations of workers, innovators, and changemakers who helped build America while fighting for dignity and equality in the workplace.

Join us in exploring this rich history through curated book displays and engaging events across our branches.

FEBRUARY 1-28

BLACK HISTORY MONTH TRIVIA CONTEST



Virtual

Compete in an online Black History trivia contest to win raffle prizes.

FEBRUARY 4-25

ONE-ON-ONE GENEALOGY SESSIONS WITH JEAN WINBORN



Tuesdays | YDL-Superior

The co-founder of the Washtenaw County African-American Genealogy Society will help you search for information about African American ancestry. See page 5 for time slots.

FEBRUARY 3

READ IT AND EAT IT - COOKBOOK CLUB



5pm | YDL-Whittaker

Our NEW Cookbook Club will discuss *Everyday Grand* by Jocelyn Delk Adams.

FEBRUARY 5

AFRICAN AMERICANS AND LABOR



6pm | YDL-Michigan

Explore the experiences African Americans had with working conditions.

FEBRUARY 8

BLACK FLUID: POETRY FOR SOCIAL JUSTICE



11am | Virtual

See how Black social justice activists have used poetic expression in the service of freedom with EMU professor Dr. Toni Pressley-Sanon, then write to explore and express your own desires for freedom.

FEBRUARY 8

AUTHOR VISIT WITH DWIGHT WILSON



2pm | YDL-Superior

An Ypsilanti author reads from his short story collections based on the voice of his 4th-great grandmother, Sarah, a fugitive from injustice.

FEBRUARY 15

WASHTENAW AFRICAN AMERICAN GENEALOGICAL SOCIETY (WAAGS) MEETING

10:30am | Virtual

A monthly virtual meetup to help those interested in genealogy navigate the complex archives of African American ancestry. All skill levels welcome!

FEBRUARY 22

TRAVEL TO TIMBUKTU WITH AISHA TRAORE

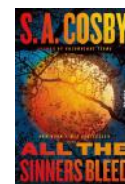


2pm | YDL-Whittaker

Dive into the history and culture of Timbuktu, learn a traditional song and dance, and practice a few words in Malian languages.

FEBRUARY 25

AFRICAN AMERICAN AUTHORS BOOK GROUP



7pm | Virtual

Join us for a lively virtual discussion of *All The Sinners Bleed* by S.A. Cosby.

FEBRUARY 27

PILLARS OF SERVICE



6:30pm | YDL-Superior

Hear about African American Greek community service missions in an intimate conversation with members of Delta Sigma Theta Sorority and Kappa Alpha Psi Fraternity.

MLK DAY OF SERVICE

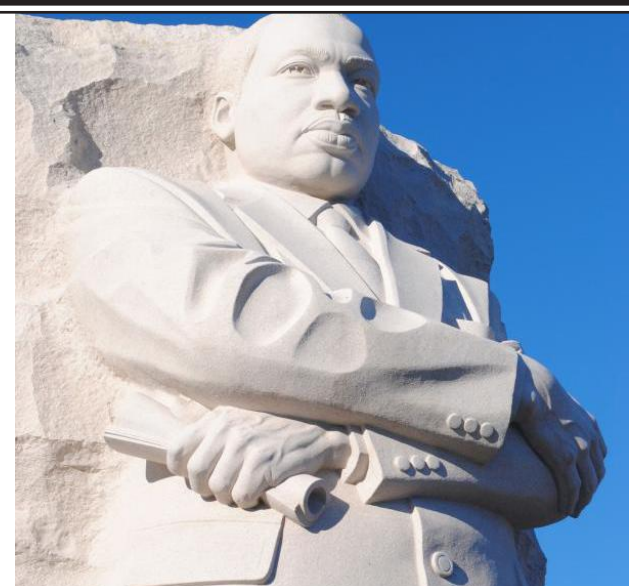
This January, YDL will honor Dr. Martin Luther King, Jr. and celebrate the only federal holiday designated as a national day of service. MLK Day invites all Americans to volunteer their time to improve their communities.

Sunday, January 12, YDL-Whittaker will host “Jazz, Spirituals and Civil Rights” - a musical reflection on Dr. King's legacy led by jazz educator Sean Dobbins.

The celebration continues on MLK Day (January 20) with events across multiple YDL branches. The Superior branch will host a concert by the Ypsilanti

Youth Choir, a hands-on craft, and a service project where you can write heartfelt messages to local seniors.

At 2pm, participate in a MLK service project at YDL-Michigan, where we'll make no-sew fleece blankets to give to Delonis Center and Hope Clinic. You can also donate trial-size hygiene products like toothbrushes, toothpaste, hand sanitizer, lotion, haircare, disposable shavers, and menstrual products for hygiene giveaway kits. See pages 4-7 for event details.





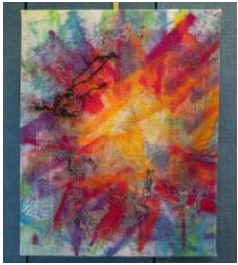
Guanhua Yao, *Freedom*

The boundary between reality and imagination dissolves in *Freedom*, a digital artwork by local artist Guanhua Yao. His piece, inspired by his life in Ypsilanti, weaves together documented reality and constructed fantasy to create something entirely new.

"My postmodern work is a tribute to freedom—freedom of form, color, and interpretation," explains Yao. "Rooted in the cultural fabric of Ypsilanti, this piece draws inspiration from the resilience, diversity, and rich history of its minority communities."

As a professional photographer, educator, and researcher, Yao brings multiple lenses to his artistic practice—both literal and metaphorical. "My art aims to transcend boundaries, blending the real and the imagined."

This approach is manifest in his piece for YDL's collection, which documents and reimagines our world, creating a visual space where reality and fantasy are in constant dialogue.



Monica Prince, *Brighter Futures*

Prince brings a message of strength and hope with *Brighter Futures*, a fiber art piece that weaves together both material and message.

"Every life is full of struggles and obstacles," Prince says. "We move through them knowing there is a bright future out there."

Prince has lived in Michigan all her life, and her love of textiles began in childhood. While she was raising five children, Prince ran a dress-making and altering business out of her home before finishing her degree in fine arts at EMU.

Now, as director of the Ypsilanti Senior Center, Prince still finds time for creating and teaching. "I love sharing my love of textiles and art with young and old," she writes. She eagerly anticipates dedicating her retirement years to her studio practice.

GRANT HELPS YDL CHESS CLUB LEVEL UP

Get ready for YDL's own Queen's Gambit! Over the next year, the Ypsilanti District Library's Chess Club will have new ways for players to test their mettle—and inspire even more girls and those from underrepresented groups to participate—thanks to a \$2,000 grant from the U.S. Chess Federation (USCF).

Now in its third year, YDL's club is a drop-in meetup for grades K-12, led by chess expert Jenny Skidmore Smith. The group meets from 4:30-5:30 pm on Wednesdays.

In previous years, club meetups culminated in a casual, unrated tournament since tournament players weren't required to purchase USCF memberships. With the grant funds, YDL can purchase a limited number of USCF memberships for regular club attendees, and the end-of-year tournament on April 12 will be rated, with pins for participants and trophies for winners. YDL has also purchased kits you can check out with boards, clocks, and how-to books from the Youth Department.

On the first Wednesday of every month (through April 2) the meetups will also include rated chess games, where students will learn to play with clocks (purchased with the grant funds). Additionally, YDL will buy a copy of ChessBase—an online tool to help players with tactics, game analysis, and game prep—so students can spend the third Wednesdays each month working on their own book of chess puzzles. Since part of the grant's mission is to inspire more female chess players, students will be encouraged to include information about their favorite female players in the book.



The second and fourth Wednesdays each month will include casual play and instruction by Skidmore Smith, who volunteers to teach the YDL Chess Club. Jenny is a lifelong chess player and has been a chess coach for 20 years. She has two sons who are also members of the YDL chess club, which typically has around 22 players at each session, with almost 80 individuals playing throughout the year.

The money from USCF will also fund a new teen intern. Alexis Buse is an experienced chess player who has attended chess club and participated in tournaments in previous years. Additional funds from Retirement Income Solutions will fund another intern who, along with Alexis, will mentor incoming female participants.

"Alexis is knowledgeable and will help new chess players learn the basics and play practice games, and be a role model for younger females attending Chess Club," said Jodi Krahnke, YDL's Head of Youth Services.

To learn more about the Chess Club, or our intergenerational chess meetups, visit ypsilibrary.org/chess.

More games at YDL

If chess isn't your speed, there are more options to explore:

DEC. 2 - FEB. 24

MAHJONG MEETUP

Mondays | 1-3pm | YDL-Whittaker

DEC. 5 & 19; JAN. 2 & 16; FEB. 6 & 20

NEW EUCHRE CLUB

Thursdays | 6:30pm

Alternating between YDL-Michigan and YDL-Whittaker

DEC. 12; JAN. 9; FEB. 13

NEW BOARD GAME MEET UP

6:30pm | YDL-Whittaker

DEC. 7 & 21; JAN. 4 & 18; FEB. 1 & 15

DUNGEONS & DRAGONS: DROP-IN FOR TEENS

10:30am | YDL-Michigan

For more details, see pages 4-7.

You can also check out games from our Library of Things (ypsilibrary.org/LOT)

NEW LOCKERS COMING TO YDL-WHITTAKER

All three branches of the Ypsilanti District Library now have self-service lockers! In September, Washtenaw County awarded YDL nearly \$200,000 in American Rescue Plan Act (ARPA) grant funding to support technological projects that help bridge the digital divide.

Part of that grant funded new lockers (open 24/7) at the Whittaker branch to go along with the after-hours lockers already available at the Superior and Michigan Avenue branches. The lockers were recently installed on the patio outside the Community Room. You can schedule locker pickups online or over the

phone, then scan your library card to pick up your materials.

The grant will also fund current and longer-term projects, including:

- 15 more hotspots (already in circulation) with service for 2 years
- Costs associated with our project to give every YCS student a library card
- A generator for the Whittaker branch, which will allow Michigan Avenue and Superior to maintain Internet and phone service if Whittaker has a power outage.



EVENTS

Adult

Dec. 1
PAUL KELLER ENSEMBLE HOLIDAY JAZZ CONCERT
 2pm | YDL-Whittaker

Join Paul Keller and his talented band of musicians as they celebrate the season with swinging jazz and good cheer for all ages. Sponsored by the Friends of YDL.



Dec. 4
LOVING ME FIRST: SELF CARE EDITION FOR 55 AND UP!
 11am | YDL-Whittaker

Learn to meditate, learn breathing techniques, enjoy drumming therapy, and more. Sharonda, a local massage therapist from Cocoa Healing Collective, will lead the workshop. Register at ypsilibrary.org/events.

Dec. 4; Jan. 22; Feb. 5
CLASSIC HEIST MOVIES
 6pm | YDL-Whittaker

Join us to watch classic heist movies. Showtimes at 6:30.

Dec. 4: *Cash on Demand* (1962) directed by Quentin Lawrence

Jan. 22: *How to Steal a Million* (1966) directed by William Wyler

Feb. 5: *Trouble in Paradise* (1932) directed by Ernst Lubitsch

Dec. 4
SMALL BUSINESS SAVVY: COMPETE WITH A LARGE COMPANY
 6:30pm | Virtual

Explore strategies and tactics you can use to compete in a marketplace crowded with competitors selling similar wares. Our Winter Small Business Savvy series is for those who want to start or own a small business. Presented in partnership with the Ann Arbor area SCORE office and the Belleville Area District Library.

Thursdays, Dec. 5-19; Jan. 9-Feb. 27
WASHTENAW COMMUNITY COLLEGE: ADVANCE YPSI PROGRAM
 11am-1pm | YDL-Whittaker

Meet with representatives from Advance Ypsi in the lobby and get your questions answered.

Dec. 5
DINE TO DONATE AT AUBREE'S
 11am-10pm | YDL-Whittaker

Enjoy delicious pizza at Aubree's on Whittaker Road for a good cause! From 11am-10pm, 20% of your dine-in, delivery, and carryout orders will be donated to YDL. Just show a copy of the flyer to your server (ypsilibrary.org/events).

Fridays, Dec. 6-27; Jan. 17-Feb. 28
DIGITAL LITERACY TUTORING WITH WASHTENAW LITERACY
 12-2pm | YDL-Whittaker

FREE sessions for adults to build essential skills such as: how to use computers, phones, and tablets, Internet safety, email and social media etiquette, and using Zoom for appointments. For more information, email steichen@washtenawliteracy.org or call 734-337-3370.

Dec. 6
DOWNTOWN TREE LIGHTING
 5pm | Plaza at YDL-Michigan

Sing along with community members, sip hot chocolate, decorate cookies, create an ornament, and visit the Bookmobile. Santa will join us for a photo op in his sleigh!

Dec. 7
WRITING AS A GIFT
 11am | Virtual

YpsiWrites facilitators will lead a virtual session on how to turn your poetry, song lyrics, and other writing into meaningful holiday gifts.

Dec. 7
SEASONAL WREATH MAKING (Ages 10+)
 2 or 3:30pm | YDL-Superior

Make a door or wall wreath using natural materials such as fresh-cut fir, cedar, holly, and ribbons. Attend ONE of the two workshops with local expert Lauren DuBois. Register at ypsilibrary.org/events.

Dec. 7
CHRISTMAS TREE LIGHTING
 6pm | Superior Township Hall

Santa will light the Township Christmas Tree. Enjoy an ice carving demo, old-fashioned carolers, hot chocolate, and cookies. Bring a camera for pictures with Santa.

Dec. 10
HANDMADE HOLIDAYS - NEEDLE FELTED ORNAMENTS
 6pm | YDL-Whittaker

Learn needle felting and decorate wool ornament balls with dyed roving. Register at ypsilibrary.org/events.

Dec. 11; Jan. 15; Feb. 12
MICHIGAN WORKS! SOUTHEAST COMMUNITY OUTREACH
 11am-1pm | YDL-Whittaker

A representative from MICHIGAN WORKS! Southeast will be in the lobby to answer questions and provide assistance on job leads, employment, job fairs, and career guidance.

Dec. 11; Jan. 18; Feb. 12
YPSIWITES WRITERS ROOM AND DROP-IN CONSULTING

Dec. 11: 6:30pm (YDL-Superior)
Jan 18: 11am (Virtual)
Feb. 12: 6:30pm (YDL-Whittaker)
 Bring a work in progress or start something new with prompts for inspiration. Trained volunteers will be available for one-on-one writing support on all forms of writing.

Dec. 14
GET YOUR CREDIT RIGHT
 11am | YDL-Superior

This workshop will help you understand your credit report, what affects your score, and strategies for improving it. Leave with resources and worksheets to put what you learned to practical use. Register at ypsilibrary.org/events.

Dec. 14
HOLIDAY CRAFT WORKSHOP
 1-3pm | YDL-Whittaker

Stop by to make an ugly Christmas sweater ornament, gift tag, or card. Materials are limited. For questions, contact Robert at neil@ypsilibrary.org.



Dec. 20
HANDMADE HOLIDAYS - NATURAL WINTER DÉCOR
 4pm | YDL-Whittaker

Bring a touch of nature's beauty into your home by crafting your own mushroom garland, pinecone mouse, or hanging ornament. Register at ypsilibrary.org/events.

Dec. 21
GIFTSWRAPPING - SWAP, WRAP, AND SHARE!
 4-5:30pm | Location TBD

Bring your spare wrapping supplies, swap with fellow patrons, and enjoy an afternoon of wrapping and community-building. Share, wrap gifts, enjoy cider and holiday cookies, chat, and sustainably prepare for the holiday season.

Dec. 28
BULLET JOURNALING: PLAN YOUR YEAR!
 1pm | Location TBD

Ryder Carroll developed the bullet journal (BuJo) method as a system of organization that allows you to plan your life flexibly in a simple notebook. We will set up our journals and plan for the coming year, with a couple of sample spreads to inspire you. Notebooks will be provided, or you can bring your own.



Jan. 8
SMALL BUSINESS SAVVY MARKETING - CONSUMER MARKETING IN A DIGITAL AGE
 6:30pm | Virtual

Explore how changes in consumer behavior will affect your approach to "Smarter Marketing" (Marketing/Sales) and the impact on your bottom line. Our Winter Small Business Savvy series is for those who want to start or own a small business. Presented in partnership with the Ann Arbor area SCORE office and the Belleville Area District Library.

Jan. 9; Feb. 22
WHAT IS A DOULA?
Jan. 9 | 6:30pm | YDL-Superior
Feb. 22 | 10:30am | YDL-Superior

Join Wrapped in Love Doula & Lactation Support to learn about doulas, what they do, how they could benefit you, and even how to become one. Childcare available for children ages 3 & up.

Jan. 11
FACEBOOK 101
 11am | YDL-Superior

Learn the ins and outs of Facebook, from posting updates to understanding privacy settings. Register at ypsilibrary.org/events.

Jan. 11
TELLING AND WRITING YOUR OWN STORIES, AND WHY IT'S IMPORTANT
 11am | Virtual

Jean Winborn, a retired educator and longtime genealogical researcher, will share examples from her own work and highlight stories of Black Americans and abolitionists. Participants will engage in writing exercises to explore their own stories and family histories.

Jan. 11 & 25; Feb. 8 & 22
INTERGENERATIONAL CHESS CLUB
 3pm | YDL-Michigan

Our club fosters a friendly and inclusive environment that encourages players from different generations to connect, learn, and grow through the game. All ages and skill levels are welcome.

Jan. 11 & 25
MINDFUL WRITING: JOURNALING AND SELF-CARE
 3pm | YDL-Superior

Join YpsiWrites for a 2-part workshop to engage in reflective journaling while developing a thoughtful, actionable plan for moving forward in the new year. Journals and pens provided. Register at ypsilibrary.org/events.

Jan. 12
JAZZ, SPIRITUALS, AND CIVIL RIGHTS
 2pm | YDL-Whittaker

Join jazz musician and educator Sean Dobbins and his septet for a musical reflection on the legacy of Dr. Martin Luther King, Jr. This all-ages show will include original music and music by the jazz masters of the past. Sponsored by the Friends of YDL.

Jan. 15
GET YOUR MONEY RIGHT FOR THE NEW YEAR! (Ages 55+)
 1pm | YDL-Whittaker

Cheranissa Williams, Economic Opportunity Manager for Washtenaw County, will help you make concrete plans on how to improve your finances. Register at ypsilibrary.org/events.

Jan. 16
WRITER OPEN MIC NIGHT
 7-9pm | Corner Brewery

Share your writing at an open mic night at Corner Brewery with supportive members of the YpsiWrites community. All are welcome to attend, read, listen, and encourage the writers. Sign up at tinyurl.com/YpsiOpenMic.

Jan. 18
ARABIC CALLIGRAPHY ART RECEPTION
 3-5pm | YDL-Superior

Join local resident Mohamed Kadri Elkjoja for light refreshments while exploring his Arabic calligraphy art display. He will also write your name artistically in Arabic calligraphy if you wish.

Jan. 20
DR. MARTIN LUTHER KING, JR. SERVICE PROJECT
 2-4pm | YDL-Michigan

Did you know that MLK Day is the only National Day of Service? Help us make new fleece blankets to give to Delonis and Hope clinic, and donate trial-size hygiene products.

Jan. 21 & 25
COMMUNITY SCANNING DAY: DIGITIZE YOUR FAMILY HISTORY!
 2-5pm | See description for location info

Use a professional-grade document scanner to make high-quality scans of documents 8.5" x 11" or smaller, including photographs, correspondence, and vital records. Limit to 15 items or less, and don't bring business or legal documents that don't pertain to family or local history or any documents that may be too fragile to survive being handled for scanning. **Jan. 21: YDL-Whittaker**
Jan. 25: YDL-Michigan
 See page 9 for more information.

Jan. 22
DEMYSTIFYING AGING EYES
 1pm | YDL-Whittaker

Dr. Erin Klukas from the Kellogg Eye Center explores how common ocular diseases affect vision with age, how these conditions are treated, and how assistive aids and community resources can help.



Jan. 22
SMALL BUSINESS SAVVY: PODCASTS
 6:30pm | Virtual

Discuss the importance of podcasts in digital marketing. Our Winter Small Business Savvy series is for those who want to start or own a small business. Presented in partnership with the Ann Arbor area SCORE office and the Belleville Area District Library.

Jan. 23
INTRO TO GENEALOGY
 6pm | YDL-Superior

Join Jean Winborn, co-founder of the Washtenaw County African-American Genealogy Society and YDL Board member, to learn how to find your family's story. Learn to navigate online databases and how best to organize and share your research.

Jan. 25
BIRTHING BASICS
 10:30am | YDL-Superior

Join Wrapped in Love Doula & Lactation Support to guide you through what to expect as you welcome your new baby. Informational hour followed by a question and answer session. Childcare available for children ages 3 & up.

Jan. 25-Feb. 28
OSCAR & RAZZIE AWARDS CONTEST 2025
 Virtual

Predict this year's Academy & Razzie Award winners! The entry with the most correct answers wins a movie prize pack. Starting Jan. 25, grab an entry form at the library or submit your picks at ypsilibrary.org by 6pm on Feb. 28. Learn more on page 9.

Jan. 28 & Feb. 25
ELEVATING YOUR WRITING CRAFT
 6:30pm | Virtual

Dive into literary craft techniques including point of view, description, and character development with author Jeannette Matthews. Participants can share their work and receive feedback. Sign up at tinyurl.com/ywcraft24. **Jan. 28:** Explore description and detail **Feb. 25:** Explore character development

Jan. 29
CYBERSECURITY: I AM NOT A VICTIM
 11am | YDL-Whittaker

Older adults are the largest group of victims of online scams. Rachael Dawson-Baglien, Senior Resource Manager at Catholic Social Services, will give you prevention tools. Register at ypsilibrary.org/events.



READ, LEARN, AND EXPLORE OVER WINTER BREAK

Summer Challenge players asked for more reading challenges, so we're offering our first Winter Challenge for kids 18 and under!

How it works:

- From December 21 - January 5, earn points by reading a book, attending a library program, or checking off an activity on this list (or pick up a copy of the list from the library).
- When you've completed 5 activities, return your tracker to any YDL youth desk to pick out a book to keep, courtesy of Domino's.

Pro Tip: You can check out Youth Kits (ypsilibrary.org/kits) and items from the Library of Things (ypsilibrary.org/LOT) to help you complete your activities. Check out YDL events on pages 4-7, or visit ypsilibrary.org/events.

Keep your brain active over break with these Explore Challenges

- Snuggle up and read or listen to a book
- Attend a library program
- Play a board game
- Build something with blocks or Legos
- Work on a puzzle, on your own or as a family
- Hike local trails or visit a park to sled
- Build a snowman (with snow or playdough)
- Practice math while you bake cookies or dessert
- Make snowflakes with paper and scissors
- Visit the Ypsi Artisan Market on December 21 or 22
- Write thank you notes to those who gave you a gift
- Have a movie marathon
- Host a friends and family talent show



DEC 6

½ Day for Grades K-5 (LCS)

DEC 19 & 20

½ Day (YCS)

DEC 21-JAN 5

Winter Break, No School (YCS and LCS)

JAN 6

School Resumes (YCS and LCS)

JAN 20

No School - MLK Jr. Day (YCS and LCS)

JAN 23 & 24

½ Day for Grades 6-12 - (Exams) (LCS)

JAN 27

No School (LCS)

FEB 12

Student Count Day (YCS)

FEB 13

No School (YCS)

FEB 14-17

No School - Mid-Winter Break (YCS and LCS)

FEB 18

No School (LCS)

YCS INTRODUCES KID-FRIENDLY LIBRARY REDESIGN

Some Ypsilanti Community School libraries, starting with Estabrook Elementary, are getting a fun new look just for kids!

The newly redesigned space at Estabrook is intended to inspire a love of reading and learning. Recognizing the diverse needs of young students, the school's media specialist and art teacher implemented features to ensure the library is accessible and engaging.

"From colorful, comfortable seating areas to interactive learning stations, every aspect of the library invites exploration and curiosity," said Jerilyn Lynn, the Technology Resource Specialist for YCS. "This innovative space blends modern design with the timeless joy of reading, creating a sanctuary that is both kid-friendly and welcoming."

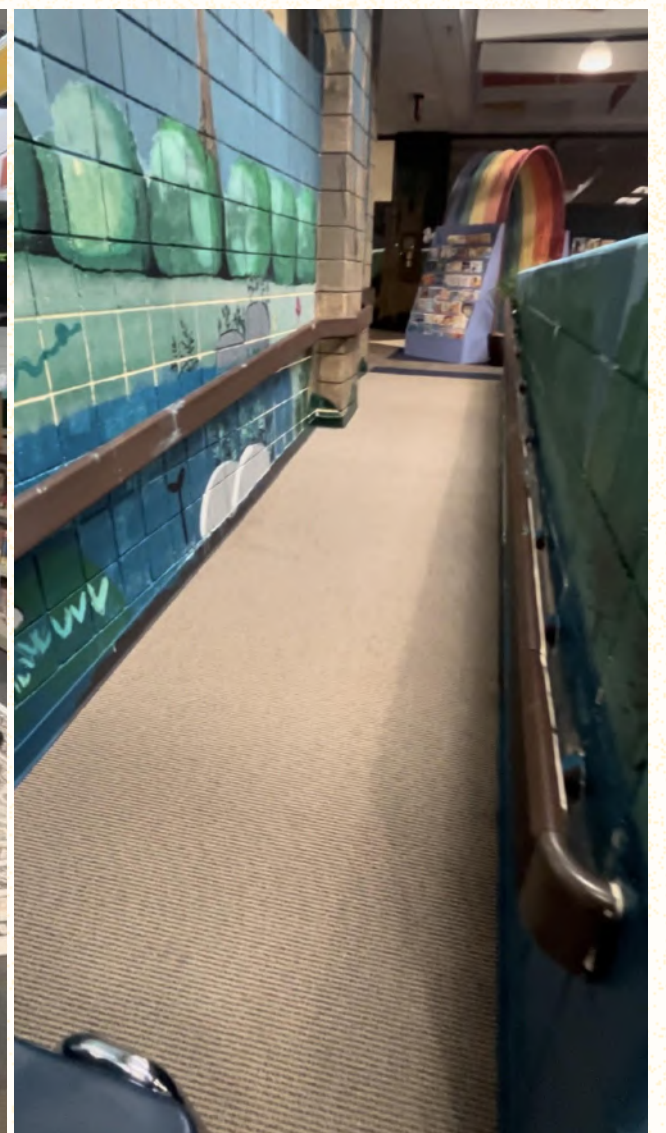
One of the standout features is the reading area, intended to make kids feel at home and foster an

environment where they can lose themselves in the pages of a book. There are also interactive activities for children to playfully engage with educational content.

"Children are learning while having fun, making it an ideal place for both educational exploration and recreational enjoyment," said Lynn.

The library also added a diverse range of new books to the collection that reflect various cultures, languages, and experiences. Lynn said the goal was to promote empathy and understanding among young readers.

"This new chapter in library design ensures that the joy of reading is accessible to every child," said Lynn.



DIGITIZE YOUR FAMILY HISTORY

Scan your important family photos and documents at the library

Visit YDL-Whittaker January 21 OR YDL-Michigan January 25 from 2-5pm to use a professional-grade document scanner—on loan from the Library of Michigan—to make high-quality digital copies of documents 8.5" x 11" or smaller. This includes photographs, correspondence, and vital records.

Digitizing records allows you to preserve your family history and protect important family heirlooms against damage or decay.



What to Bring for Scanning:

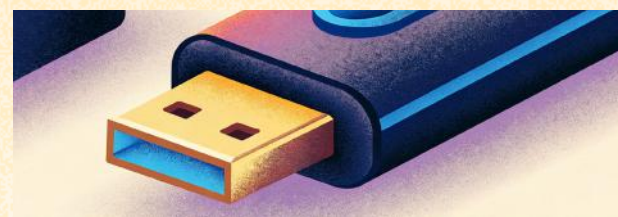
- Family photos
- Correspondence, postcards, newspaper clippings
- Other unique documents significant to your family or local history size 8.5" x 11" or smaller

What NOT to Bring to This Event:

(These kinds of documents can be scanned any time via our standard free scanning services)

- Business or legal documents that don't pertain to family or local history
- More than 15-20 items (which cannot be reasonably scanned, one document at a time, in 15 minutes)
- Documents that may be too fragile to survive being handled for scanning
- Documents that may be dirty or contaminated

Scans may be saved to a USB flash drive or sent to an email address as .pdf files. Attendees can bring their own USB Drives or purchase one at the library for \$5 (cash only).



Please be aware: This event is intended to help the community digitize documents to preserve family and local history. We cannot answer questions about the validity or use of scanned documents for legal or commercial purposes.

For questions, please contact Brett Hamilton (bhamilton@ypsilibrary.org, Whittaker Branch) or Mani Brito (mbrito@ypsilibrary.org, Michigan Avenue Branch).

WHAT RESOLUTION WILL YOU MAKE?

Washtenaw Literacy helps learners gain life skills in reading, writing, digital literacy, and English as a second language. Helping as a volunteer could be the perfect New Year's goal!

"There were giggles emanating from the room as I walked by," said James S. after his first day as a volunteer ESL tutor with Washtenaw Literacy. "I knew the library offered tutoring, but I didn't expect the explosion of joy and engagement that I found."

No experience is required, and training is provided for volunteers. You just need to attend one regularly scheduled information session and commit to volunteering about 3 hours a week for at least 4-6 months. Find the next information session at washtenawliteracy.org.

Washtenaw Literacy believes equity cannot exist without literacy and strives to show that literacy is a right, and that learning can be joyous.

"We know these statements to be true," said Washtenaw Literacy Executive Director Carol McCabe. "Tutors and adult learners share stories that illustrate these concepts every day."

You can become part of the winter training cohort and help change a life. Perhaps even your own!

"I got into tutoring to help someone," said James S. "I didn't know how much it would help me."



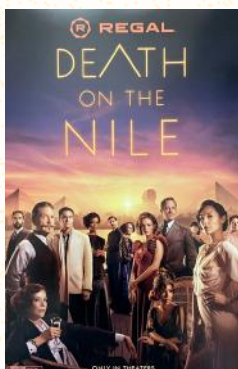
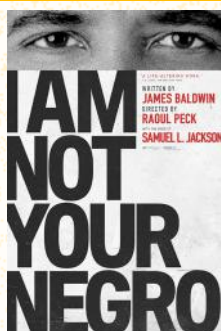
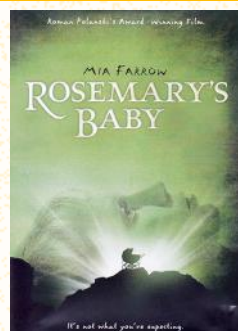
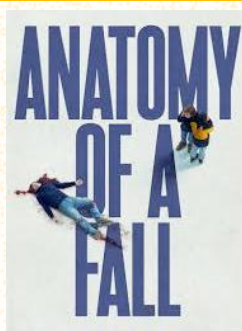
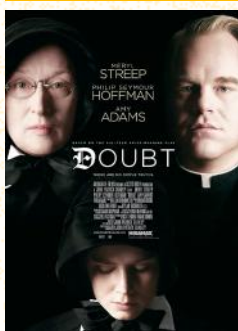
AND THE OSCAR GOES TO...



It's time for YDL's annual Oscars and Razzies Awards Contest! Help us celebrate the best—and worst—movies of the year. Pick the winner in the most award categories in both award shows to win a movie prize pack.

Ballots will be available starting January 25 and are due by 6pm on February 28. Enter online or at any YDL branch. To qualify, you must live within YDL's service area and be able to pick up your prize from a YDL location. Limit one entry per person.

Previous award winners you can stream with your library card on Kanopy



Visit kanopy.com/ypsilibrary, then log in with your library card number.

NAVIGATE TAX SEASON



Tax help at YDL is back! AARP's Tax-Aide assistance program is provided by trained volunteers in partnership with the IRS. This program is primarily for taxpayers over 50 with low to moderate incomes.

Tax-Aide volunteers have been doing taxes at YDL at no cost for over 16 years, completing taxes for hundreds of taxpayers annually. AARP membership is not required.

Starting Jan. 2, call 734-482-4110 to make an appointment:

- **Whittaker: x2411**
- **Michigan Avenue: x2421**
- **Superior: x2431**

You can also visit ypsilibrary.org/taxprep for more information. Before meeting with your AARP tax preparer, you'll need to pick up an informational packet and forms that must be filled out in advance of your appointment.

TIPS TO MAKE YOUR FILING EXPERIENCE RUN AS SMOOTHLY AS POSSIBLE:

- If filing jointly, both spouses must be present.
- Make sure you bring: All W-2s, 1098s, 1099s, and any other records of income.
- Photo ID of you and your spouse.
- Social Security card for you, your spouse, and any dependents.
- Birth dates for you, your spouse, and any dependents.
- A voided check or other bank document with account and routing numbers printed on it for direct deposit of your refund.
- 2022 and 2023 tax returns, if you have them.
- If you have health insurance through the Health Insurance Marketplace (ACA), bring Form 1095-A.
- If you are eligible for a heating credit, bring your DTE bill from Dec 2024, Jan 2025, or Feb 2025.
- If you are eligible for the property tax credit, bring Summer & Winter tax statements OR bring proof of rent paid along with the name and address of your landlord.

SCAM

Avoid Tax Scams

Watch for telltale signs that could indicate you've been a victim of a tax scam. A scam may be happening if you receive any of these:

- A tax transcript in the mail from the IRS that you didn't order.
- An Employer Identification Number that you didn't request.
- A Form W-2 from an unknown employer.
- An unexpected notice or email from a tax preparation company that asks you to:
 - » Confirm access to an existing online account.
 - » Disable an existing online account.
 - » Confirm a new online account.
- A letter from the IRS—during a year you didn't earn income or file a tax return—that says:
 - » You owe additional tax.
 - » A balance due offset a refund.
 - » Collection actions were taken.

You can always verify what you owe or report scams at IRS.gov/account.

CATCH THE WINTER FOOD MARKET

Through December 21, Food Gatherers is hosting an indoor food market on Washington Street. Every Saturday from 10am-2pm, you can support your local food system, enjoy your favorite seasonal produce, and shop handmade goods!

At the market, you can pay with cash, or swipe a credit card at an info booth for tokens. You can also use an EBT/P-EBT Card and earn Double Up Food Bucks (\$1 for every \$1 spent). Visit growinghope.net to learn more.

WINTERS BEST, LOCAL & FRESH

Saturdays: 10am-2pm
Nov 9 - Dec 21
16 S. Washington St.



WARMING CENTERS

For the first time, Ypsilanti will have daily overnight shelter through the winter. See the charts below to find details about where you can find daytime and overnight shelters.

All YDL locations are also a place to stay warm during regular hours. See page 12 for hours of operation and branch addresses. Holiday closures and hours of operation are also available at ypsilibrary.org/visit.

For more information about seeking overnight shelter, getting referrals, or other questions, call Housing Access of Washtenaw County (HAWC) at 734-961-1999.

You can access the most up-to-date list of Warming Centers at washtenaw.org/2789/Winter-Warming-Centers.

DAYTIME SHELTER LOCATIONS	ADDRESS	2024-25 DATES
Ypsilant Freighthouse (Mon-Thurs, 8am - 6pm)	100 Market Pl., Ypsilanti	Nov 13 - Mar 31
Luther House ED Building (Mon - Fri)	1510 Hill St., Ann Arbor	Nov 11 - Dec 6
First Baptist Church (Mon - Fri)	517 E. Washington St., Ann Arbor	Dec 9 - Jan 3
St. Mary's Student Parish (Mon - Fri)	331 Thompson St., Ann Arbor	Jan 6 - 31
First Congregational Church (Mon - Fri)	608 E. William St., Ann Arbor	Feb 3 - 14
First Baptist Church (Mon - Fri)	517 E. Washington St, Ann Arbor	Feb 17 - Mar 14
Ann Arbor Day Site (Mon - Fri)	TBD	Mar 17 - Apr 11
Delonis Center (Sat - Sun)	312 W. Huron St., Ann Arbor	Nov 11 - Apr 13

OVERNIGHT SHELTER LOCATIONS	ADDRESS	2024-25 DATES
St. Luke's Episcopal Church (Mon - Fri)	120 N. Huron St., Ypsilanti	through April 13
Second Baptist Church (Sat - Sun)	301 S. Hamilton St., Ypsilanti	through April 13
Delonis Center (Daily beginning at 7pm)	312 W. Huron St., Ann Arbor	through April 13

Call 734-961-1999 for a referral for overnight shelter accommodations.

MEET THE 2024 WRITERS OF YPSILANTI

YpsiWrites is excited to introduce the 2024 Writers of Ypsilanti. YpsiWrites—a writing-based nonprofit that believes everyone is a writer—chose the theme “Writing Our Stories.” All nine of this year’s writers embody the 2024 theme



Marc Arthur (he/him) lives in Ypsilanti and writes plays, poetry, research papers, grants, and art and performance criticism.



Crystal Campbell (she/her) is an EMU alum who has done community engagement work in Ypsi. She is involved in several Ypsi-serving civic-social organizations and leads projects that advance opportunity and equity in Ypsilanti, Ypsilanti Township, and Superior Township.



R.J. Fox (he/him) loves the “creative spirit, the grittiness, and the abundance of coffee shops, bars, restaurants, and shops” that Ypsilanti has to offer. R.J. has written 15 screenplays, one of which was turned into a feature film that premiered at the Cinetopia Film Festival in Ann Arbor.



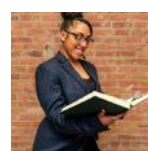
Monica Hickson (she/her) loves the diversity of the people and the rich history of Ypsilanti. She sees writing as a platform for education, entertainment, and the enrichment of a person's life!



Bradley Kraft (he/him) is an EMU alum. He is a poet and writes spoken word. He believes that writing has the “power to convey ideas, images, and emotion across vast amounts of time.”



Georgia Krieger (she/her) has lived and worked in Ypsilanti for the last twelve years. She loves its small-town atmosphere, rich culture, and focus on the arts. Georgia has written memoirs and personal essays, but her main genre is poetry.



Ruth Mella (she/her) is Ypsilanti’s first Youth Poet Laureate. She attended Ypsilanti Community Schools and graduated from Washtenaw International High School. Ruth is a Social Work student at EMU and writes poetry and short stories.



Emma Rodseth (she/her) lives, writes, walks, and practices movement arts in Ypsilanti. She writes poems, fiction, essays, and creative nonfiction. Emma believes writing and community benefit everyone.



Ameera Salman (she/they) is a student at EMU. She writes poetry and journalistic storytelling. To Ameera, Ypsilanti is a highly underrated place. She loves the architecture, food, and passionate people, and has found many opportunities for introspection at Ford Lake.

REMINDERS FOR A HEALTHIER WINTER



Promote community health this cold and flu season with these tips from the Washtenaw County Health Department:

- If you feel sick, avoid being around others.
- Everyone 6 months and older should get the updated COVID vaccine. Visit washtenaw.org/covid19vaccine for more info.
- Everyone over 6 months old should get a flu vaccine every year. Flu shots are especially important for older adults, anyone with underlying health conditions, pregnant people, and young kids.

- **Take steps to avoid spreading illness.** Cover your nose and mouth when you sneeze or cough, wash your hands often using soap and warm water, and disinfect surfaces and objects that may be contaminated with germs. Wearing a surgical, KN95, or N95 mask around others can help prevent the spread of illness.
- **Schedule a check-up with your doctor** to make sure you and your family members get any routine vaccines or preventative screenings needed.

- **A nutritious diet, plenty of sleep, and regular exercise** can go a long way in helping you feel better and stay healthy during cold and flu season.
- **BONUS TIP for older adults, new parents, and pregnant people: ask your doctor about RSV protection.** RSV is a common respiratory virus that causes mild symptoms for most people, but infants and older adults are more likely to get seriously ill from RSV. Ask your healthcare provider about RSV vaccines or visit cdc.gov/rsv/vaccines to learn more.

It's Time to Get Your COVID-19 & Flu Vaccines



Want to stay updated on local public health in Washtenaw County? Join the Health Department’s email list at bit.ly/WCHD555.

WRITE YOUR ADVENTURE

Ypsilanti is home to dozens of newly published young writers. Let them inspire you to start your own tale of intrigue!

Otherworldly Pursuits at the Dawn of Future Horizons features 68 local writers between the ages of 8 and 14. 826michigan published the work, which was the culmination of rounds of drafts, peer editing, and revisions from their weekly after-school writing lab at YDL and Ypsilanti Community Middle School. It's in circulation at YDL, so check out a copy today!

Can you use these adventurous opening lines from the book in your own work?

“The Day I Saved My Mom?!”

By Cesar Amaya, age 13, YCMS

One bloomy night, it was 8:00 p.m., and I was around ten years old. My mom was making dinner and my father was watching television, when suddenly a warning from the television sounded . . .

“Arise”

By Ethan Atkins, age 12, YCMS

It was a normal night at the house. Zack and his family were asleep. Then Zack woke up and he dodged Death . . .

“Sloppy the Superhero”

By Ayaan Jain, age 9, South Arbor Charter Academy

One time, there was a kid named Sloppy. He wanted to be a superhero, but he couldn't be one because he didn't have superpowers. But then an alarm came . . .

“Ach the Space Dog”

By Riya Choudhary, age 9, South Arbor Charter Academy

Ach was a dog who lived in space. His parents hated Earth and thought it was a waste of time. But Ach thought Earth was a unique place and wanted to visit...

Continued on Page 12

“The Adventures of Bob”

By Angus Wilson, age 9, YIES

The villager Bob lived in Adventure Village with his Mom and Dad. Bob was ten years old and loved to go on adventures. Unlike the other villagers, Bob was up for the challenge of going to other dimensions . . .

“The Haunted Mansion”

By Grace Zhao, age 10, Pattengill Elementary

One day, a group of friends came into a haunted mansion to discover the mysteries of it, but it was a big mistake . . .

“Mittens the Explorer. The Truth.”

By Jules Strube, age 9, homeschool

Hi, my name is Mittens. I will tell you the tale of how I lost my tail. It was a normal day, but suddenly, I tumbled into a bat cave . . .



“A Princess's Journey”

By Rae Mussen, age 11, Erickson Elementary

Once upon a time in the land of Lylaconukei, a girl named Seti was kidnapped and taken to the island of Petaki. No one has ever returned from this island, not one soul. Luckily, Seti was a survivalist and had her heart set on getting back home . . .

“The Jewel of Frostwind”

By Sonya Bialk, age 12, homeschool

Sania lived in the kingdom of Frostwind in a castle made of icicles. She was an ice fox and the queen’s youngest messenger. Right now, she had to tell the queen something important. Just that morning, her bedroom ceiling had dripped on her, and her chair had turned to mush. It was very strange because nothing ever melted in Frostwind—it was too cold . . .

FRIENDS OF YDL BOOK SALE



The Friends of YDL Book Sale is coming again in January! Mark your calendars for January 16-19 at YDL-Whittaker.

Book sale prices are \$1 for hardcovers, 25¢ for paperbacks, and 50¢ for oversize paperbacks. On January 19 there will be bags of books available for \$5, and some books will be sold for a reduced price. See hours below. January 16 from 6-8pm will be a members-only preview sale. Memberships will be available for purchase at the door, so it’s the perfect time to join the Friends and help make library events possible!

BOOK SALE HOURS:

- Jan 16 6-8pm (members-only sale)
- Jan 17 11am-5pm
- Jan 18 11am-3pm
- Jan 19 1-4pm

WHITTAKER BOOK SHOP HOURS:

- Monday 10am-6pm
- Tuesday 10am-6pm
- Wednesday 10am-6pm
- Thursday 10am-6pm
- Friday 10am-4pm
- Saturday 10am-4pm
- Sunday 2-4pm



WINTER WITH TheRide.org

With winter weather comes potential bus delays due to road conditions. TheRide’s MyAlerts system allows you to select which route(s) you use and receive an email directly if a route you use is on detour. You can sign up for MyAlerts and get information about TheRide’s holiday hours at TheRide.org.

If your bus stop is blocked due to snow or ice, you should wait at the nearest cleared spot. Remember to leave extra time for your commute, particularly on snowy days.

GETTING TO YDL ON THE BUS:

- YDL-Whittaker:** Accessible on the 46 line
- YDL-Michigan:** Accessible on the 6 line, or a 5-minute walk from the Ypsilanti Transit Center
- YDL-Superior:** Accessible on the 42 line



WWW.YPSILIBRARY.ORG



LOCATIONS & HOURS

YDL-WHITTAKER	YDL-MICHIGAN	YDL-SUPERIOR	YDL-BOOKMOBILE
5577 Whittaker Road Ypsilanti, MI 48197 HOURS Mon-Thurs: 9am-9pm Fri and Sat: 10am-6pm Sun: 1-5pm	REOPENING SOON! 229 W. Michigan Ave Ypsilanti, MI 48197 Visit ypsilibrary.org/michigan-avenue-branch-closure for more information and updates.	1900 Harris Road Ypsilanti, MI 48198 HOURS Mon-Thurs: 9am-9pm Fri and Sat: 10am-6pm	Ypsilanti, MI 48197 HOURS Mon-Thurs: 4-8pm

Board meetings are generally held on the fourth Wednesday of the month at 6:30pm. They are open to the public. Visit ypsilibrary.org/board for meeting schedules, locations, agendas, and minutes.
Visit ypsilibrary.org/contact-us or call 734-482-4110 for assistance.

Board of Trustees

Bethany Kennedy	Patricia J. Horne McGee
Chris Tebbens	Brian Steimel
Kristy Cooper	Jean Winborn
Theresa M. Maddix	Lisa Hoenig, Director