



YPSILANTI
DISTRICT
LIBRARY
— ask Why —



Photo by Chuck Anderson

ANNUAL REPORT 2023

PEAKS AND VALLEYS

Following the new Superior Library's opening, the YDL team was flying high. 2023 was to be the "Year of the Deep Breath." We adopted a new strategic plan and were working to get comfortable with our third full-service location and expanded staff.

Mother Nature had other ideas. A torrential downpour the evening of July 1 flooded the historic YDL-Michigan Avenue building, dealing a gut punch to the staff, Board, and community.



Lisa Hoenig, Library Director

Though YDL-Whittaker and YDL-Superior could take up some slack, Downtown definitely felt its library's absence. Focused on coming back strong, we remediated the damage and developed an exciting interior redesign using community input from a 2019 space needs assessment and 2022 strategic plan retreat.

We're putting the storm behind us, and can't wait until we can welcome patrons back downtown in 2024.



YDL's Michigan Avenue branch suffered a flood in July as the historic building's roof drains were overrun with rain water.



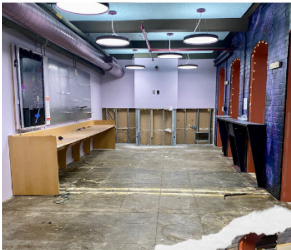
The Recovery Work

- ▲ We lost fewer than 100 books, but the building suffered significant structural damage.
- ▲ Addressing the water damage and mold issues took 2.5 months of dismantling wall structures and removing floor sections.

- ▲ Our architect took a Matterport 3D scan of the interior to help design the renovation.
- ▲ Plans for reconstruction include improvements as well as restoration.

The Silver Linings

- ▲ All staff were retained and assisted at other locations, building a more cohesive team.
- ▲ Stakeholders and officials saw firsthand how important the MA branch is to the downtown when they toured the building damage.
- ▲ Historic District Commission was encouraged by the plans we shared, which bodes well for future renovations.





STEM @ YDL

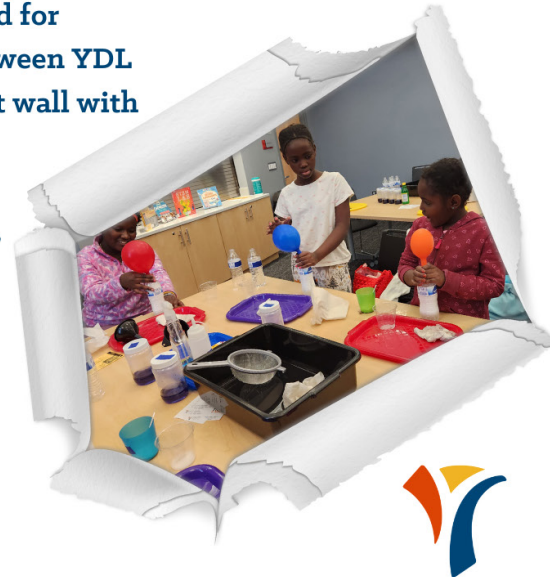
A \$30,000 grant from Toyota funded Project STEM @ YDL. More than 4,500 kids attended new STEM programming.

Full STEAM ahead

Project STEM @ YDL was funded by Toyota North America as part of their Driving Possibilities initiative. It brought large STEM tools, kits, activities, and talks from experts in the areas of science, technology, engineering, arts, and math. The program's success led to another \$30,000 donation from Toyota for 2024.

What it means

- ▲ Large STEM equipment designed for exploratory learning rotates between YDL branches: a wind tunnel, magnet wall with accessories, and dino bones.
- ▲ 40+ new programs and speakers, including monthly STEAM cafes that introduce teens to professionals in STEM fields.
- ▲ Four new stem kits at each YDL location.



We launched a dedicated web page for our local history archives, and committed to a brand new mission statement.

COLLECTING HISTORY & LOOKING AHEAD

The stories of Ypsilanti

The addition of a new collection inspired us to reimagine our online local history archives. The revamped history.ypsilibrary.org includes:

- The AP Marshall Oral History Archive
 - Ypsi Stories podcast episodes
 - Ypsilanti Commercial Newspaper records
- The brand new Ypsi Farmers & Gardeners Oral History Project, featuring interviews with local BIPOC and working class food growers

Our new mission

The Ypsilanti District Library builds community through discovery, education, and partnerships.

YDL's 2023-25 strategic plan was shaped through the lens of the above mission statement. The plan focuses on dynamic resources, optimized facilities, advancing equity, diversity, and inclusion, and an engaged community. We strive to improve collections, reach underserved communities, combat misinformation, and more.





On November 14, the new Superior Library celebrated its 1-year anniversary. It has truly been embraced by the community.

The effect of a full-service Superior branch

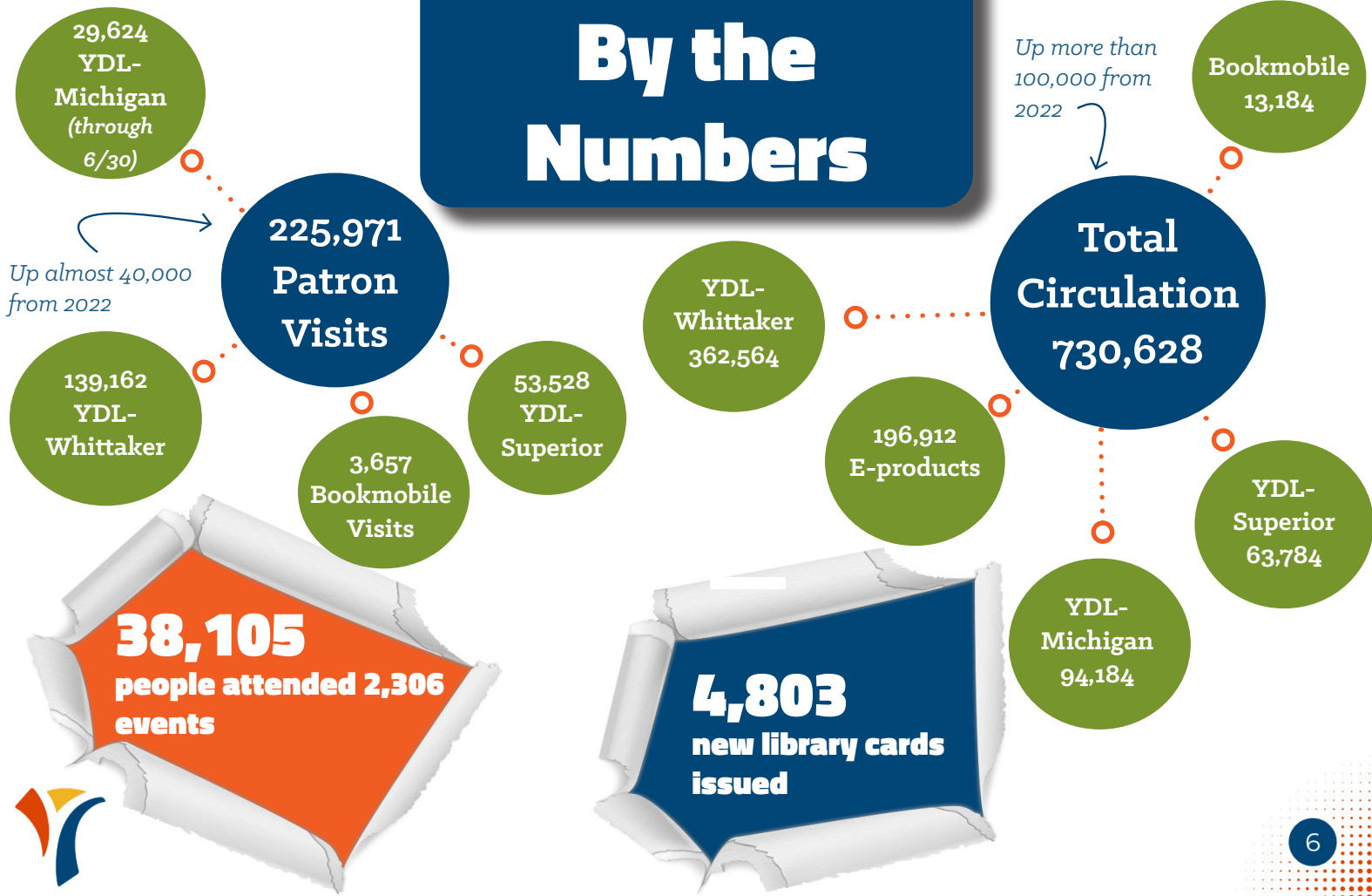
A \$6,500 donation from the Friends of YDL helped us achieve the \$2M Next Chapter capital campaign goal in the fall, but the branch began making a difference when the doors opened! We served 1,170 lunches during our first summer Lunch, Listen & Learn program, and that was just the beginning.

EACH MONTH at the Superior branch in 2023 we saw:

- 70+ new library cards issued
- 4,000 items circulated
- 350 patrons using computers
- 590 connections to WiFi
- 2,800 visitors
- 300 patrons attending programs
- 100+ people using meeting rooms



By the Numbers





FINANCIAL REPORT

REVENUE	FY 2022-2023	% of total
Property Taxes	\$5,984,412	93.7%
Penal Fines	\$69,569	1.1%
State Aid	\$89,260	1.4%
Interest & Other	\$85,374	1.3%
Grants, Donations, Friends of YDL	\$155,865	2.4%
Total Revenue	\$6,384,480*	100%**
EXPENDITURES	FY 2022-2023	% of total
Salaries & Benefits	\$3,633,136	65.1%
Library Materials	\$614,041	11.0%
Contractual	\$216,061	3.9%
Automation & Capital Outlay	\$346,063	6.2%
Utilities & Repairs	\$417,604	7.5%
Other	\$357,585	6.4%
Total Expenditures	\$5,584,490	100%**

* \$800,000 designated to Capital Asset Fund

** Due to rounding, percentages may not add up to 100.